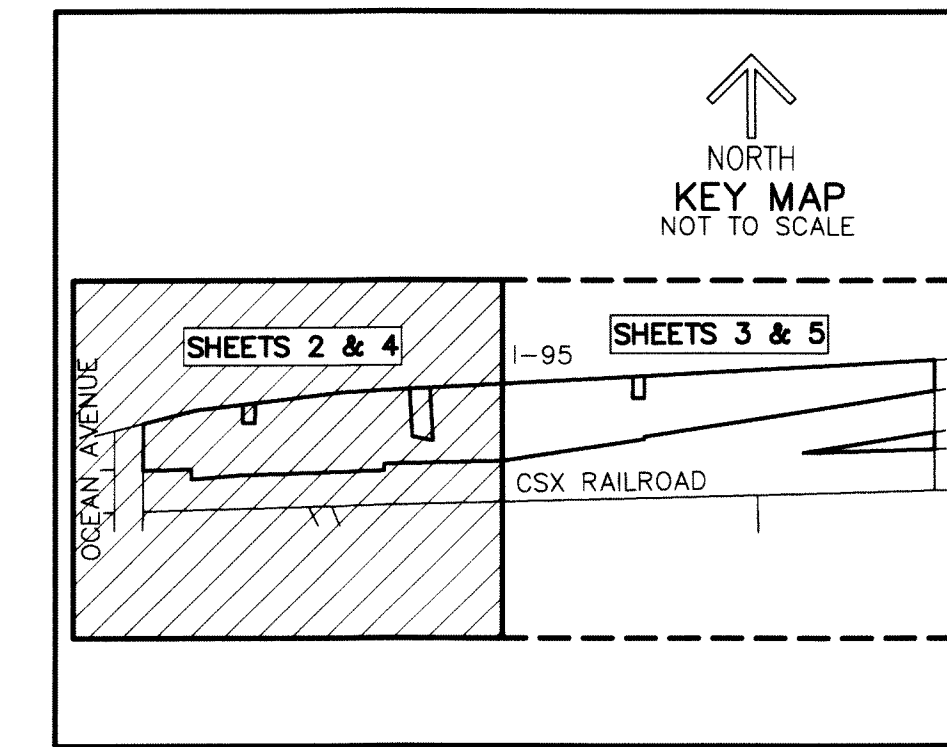


THIS INSTRUMENT PREPARED BY
 DAVID P. LINDLEY
 OF
CAULFIELD and WHEELER, INC.
 SURVEYORS — ENGINEERS — PLANNERS
 7900 GLADES ROAD, SUITE 100
 BOCA RATON, FLORIDA 33434 — (561)392-1991
 CERTIFICATE OF AUTHORIZATION NO. LB 3591

STOR-All LUXURY RV & BOAT STORAGE

BEING A PORTION OF THE NORTHWEST QUARTER OF SECTION 28, TOWNSHIP 45 SOUTH, RANGE 43 EAST,
 CITY OF BOYNTON BEACH, PALM BEACH COUNTY, FLORIDA



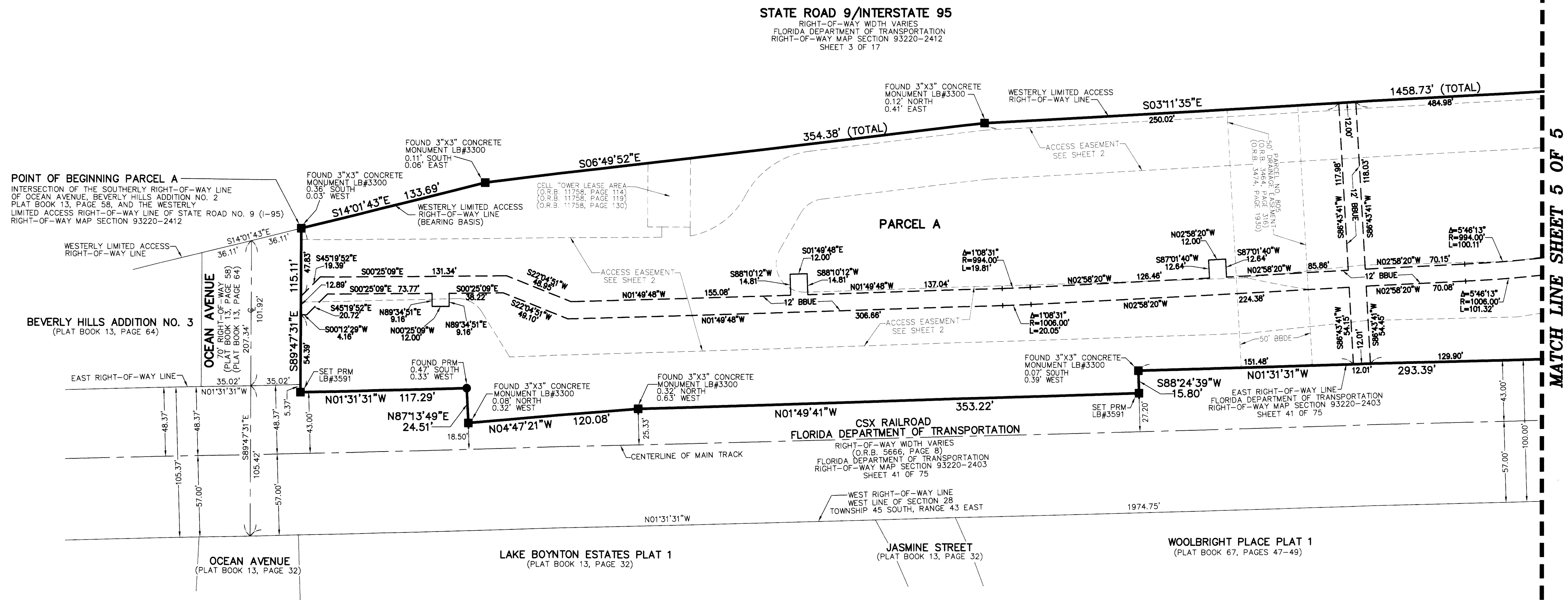
SHEET INDEX

SHEET 1	COVER
SHEET 2	MAP SHEET
SHEET 3	MAP SHEET
SHEET 4	UTILITY EASEMENT DETAIL
SHEET 5	UTILITY EASEMENT DETAIL

54

SHEET 4 OF 5

12' BOYNTON BEACH UTILITY EASEMENT DETAIL



- LEGEND/ABBREVIATIONS**
- ⊕ — CENTERLINE
 - Δ — DELTA (CENTRAL ANGLE)
 - CB — CHORD BEARING
 - CD — CHORD DISTANCE
 - BBDE — BOYNTON BEACH DRAINAGE EASEMENT
 - BBUE — BOYNTON BEACH UTILITY EASEMENT
 - L — ARC LENGTH
 - LB — LICENSED BUSINESS
 - O.R.B. — OFFICIAL RECORD BOOK
 - R — RADIUS
 - SET PRM — INDICATES PERMANENT REFERENCE MONUMENT
 4"x4"x24" CONCRETE MONUMENT WITH METAL DISK
 STAMPED "C&W PRM LB#3591"
 UNLESS OTHERWISE NOTED.
 - PRM — INDICATES PERMANENT REFERENCE MONUMENT
 NAIL AND DISK STAMPED LB#3300
 UNLESS OTHERWISE NOTED.

